

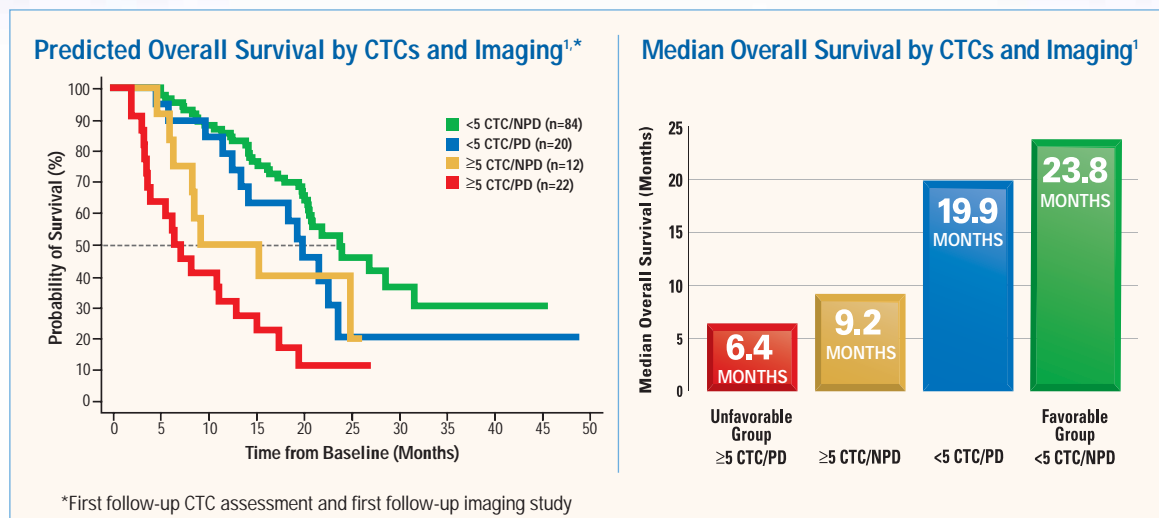


NOW CLEARED FOR  
MONITORING

# CellSearch™

Circulating  
Tumor Cell Test

## The CellSearch™ CTC Test results provide new insights into disease status and prognosis



NPD = non-progressive disease; PD = progressive disease

*"Our results indicate that serial assessment of CTCs in patients with metastatic breast cancer correlated with survival at least as well as serial radiographic assessment. Furthermore, the evaluation of CTCs provided prognostically significant information in patients who were felt to be stable or responding as well as those progressing by radiographic criteria."<sup>3</sup>*

— Thomas Budd, et al. Clinical Cancer Research. 2006

## The combination of CTC measurement and imaging may provide the most accurate assessment of prognosis<sup>1</sup>

To start serial monitoring your patients with metastatic breast cancer, contact your local laboratory or Veridex sales representative, call 1-877-VERIDEX, or visit [www.veridex.com](http://www.veridex.com)

### References:

1. Data on file. Veridex, LLC. 2. Cristofanilli M, Budd GT, Ellis MJ, et al. Circulating tumor cells, disease progression, and survival in metastatic breast cancer. *N Eng J Med.* 2004;351:781-791. 3. Budd GT, Cristofanilli M, Ellis MJ, et al. Circulating tumor cells versus imaging—predicting overall survival in metastatic breast cancer. *Clin Cancer Res.* 2006;12:6403-6409.

VERIDEX  
LLC

a Johnson & Johnson company